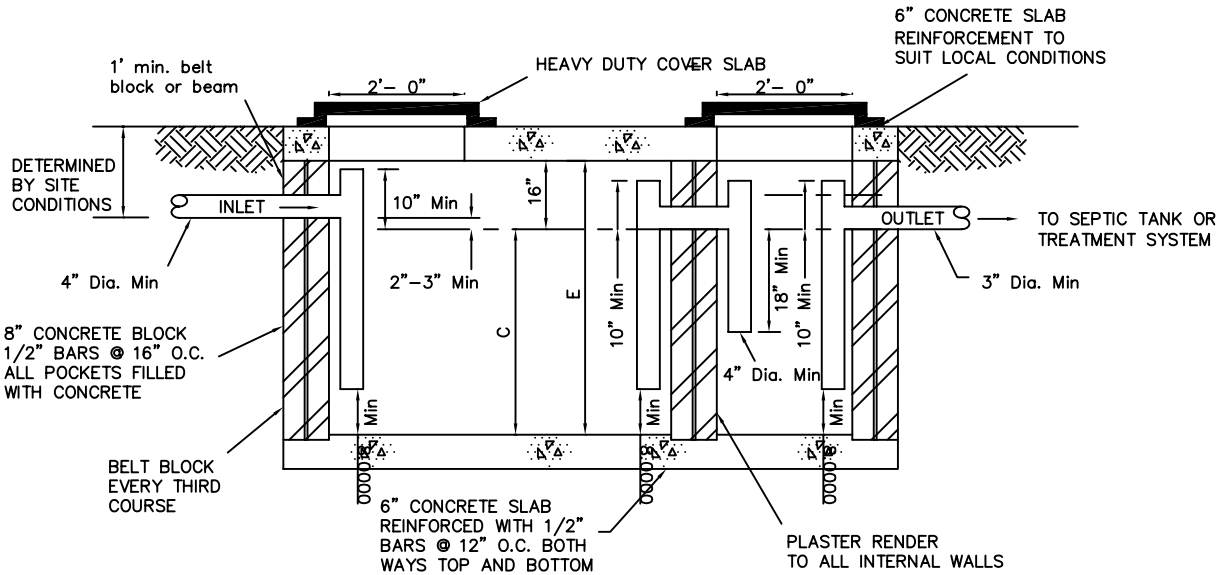
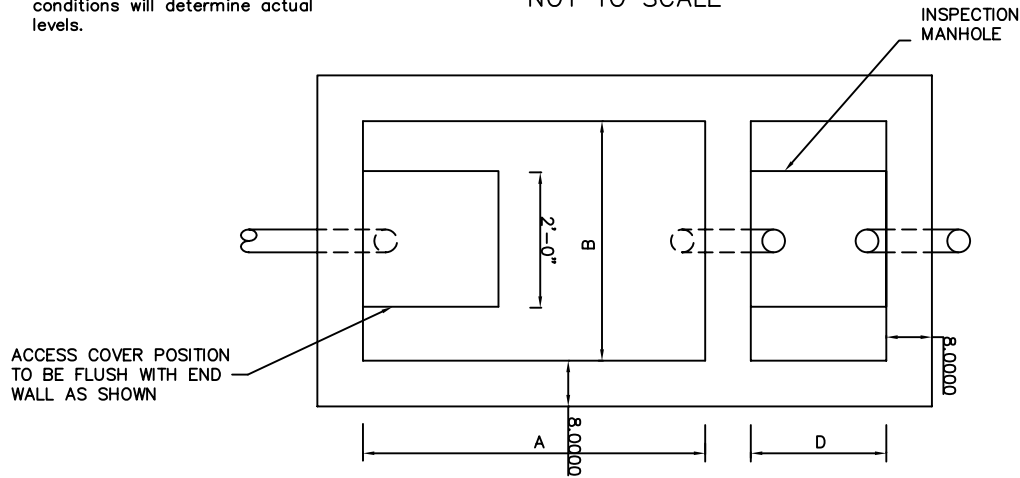


# COMMERCIAL GREASE INTERCEPTOR



1. Levels of ground and ground water shown are ideal. Local site conditions will determine actual levels.

NOT TO SCALE



COMMERCIAL GREASE INTERCEPTOR					
Gal.	Normal Dimensions				
	A	B	C	D	E
600	5'6"	3'6"	3'0"	3'0"	2'8"
750	6'0"	3'6"	3'6"	3'0"	4'10"
1000	6'0"	4'0"	4'0"	3'0"	5'4"
1250	6'6"	4'0"	4'6"	3'6"	5'10"
1500	7'0"	4'6"	4'6"	3'6"	5'6"

SCALE	DATE	BY
M.A.S.	0-01	VIEW
SHEET	REV	
0		

**COMMERCIAL GREASE INTERCEPTOR STANDARD DETAIL**

GENERAL DETAILS

WATER AUTHORITY - CAYMAN  
P.O. BOX 1104, ST. CAYMAN ISLANDS  
345-949-5352

REV	DATE	BY	DESCRIPTION
1	07/14/05	RM	Added 1500gal data
			ORIGINAL RELEASE

DATE	BY
04/14/05	
PROJECT NO.	