

## OUR COMMITMENT to you

The Water Authority was established in 1983 as a statutory body responsible for supplying wholesome and affordable drinking water to the people of the Cayman Islands.

The Water Authority is also responsible for the proper treatment of wastewater and for the protection of the fresh groundwater lenses that exist throughout the Cayman Islands.

For more information, visit us at  
[www.waterauthority.ky](http://www.waterauthority.ky)

We're social!



Find us, like us, follow us!



**Water Authority - Cayman**

*"Suppliers of the World's Most Popular Drink"*

### GRAND CAYMAN

P.O. Box 1104, Grand Cayman, KY1-1102,  
Cayman Islands

Tel: (345) 949-2837 Fax: (345) 949-0094

Email [info@waterauthority.ky](mailto:info@waterauthority.ky)

### CAYMAN BRAC

P.O. Box 240, Cayman Brac, KY2-2002,  
Cayman Islands

Tel: (345) 948-1403 Fax: (345) 948-1404



## ABOUT YOUR METER

Learn more about how your water meter works and how to read your water meter using the information contained in this brochure.



**Water Authority - Cayman**

*"Suppliers of the World's Most Popular Drink"*



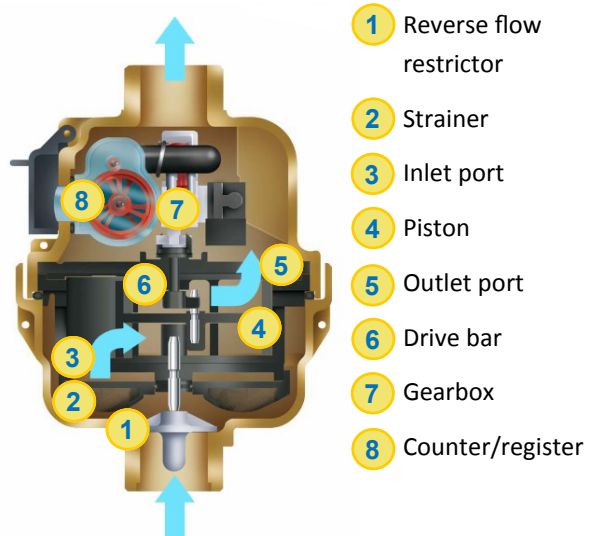


## DID YOU KNOW?

You can access even more information about how your water meter works, how to read it, and how to report any unusual readings at [www.waterauthority.ky](http://www.waterauthority.ky)!

### How Your Meter Works

Your water meter utilizes **positive displacement volumetric type measurement technology** to measure water flow.



Inflowing water fills your meter's chamber, setting a rotary piston in motion. Each time the chamber is filled, the piston completes a revolution. The piston is connected to a gear mechanism which converts each rotation of the piston into a volume of water that is recorded on the meter's counter or register. The volume of water that passes through the meter is displayed in cubic metres ( $m^3$ ) on the counter; this is the number our Meter Readers record to create your monthly bill.

If your meter is registering a higher flow of water than usual, the reason is generally a leak in the plumbing system of your home rather than a faulty meter. Visit [www.waterauthority.ky](http://www.waterauthority.ky) to learn more about detecting common leaks and requesting a water meter test.

### How To Read Your Meter

#### 1. LOCATE YOUR METER BOX

Although meter boxes come in a variety of forms, all are located as close as possible to one of the front corner boundaries of your service location.

#### 2. CAREFULLY REMOVE THE METER BOX COVER

There are quite a few creatures that like to call meter boxes home, so please exercise caution when opening your meter box. In addition, some meter boxes have metal covers which can be heavy.

#### 3. LOCATE YOUR METER'S COUNTER/REGISTER

The volume of water that passes through your meter is displayed in cubic metres ( $m^3$ ) on the counter/register and should be read from left to right.

The volume in cubic metres will be displayed in either white numbers on a black background or black numbers on a white background. The volume in litres will be displayed in white numbers on a red background.

You may have to open a small cover or clean dirt/silt off your meter to be able to read the counter.



#### 4. READ YOUR METER REGULARLY AND RECORD YOUR READINGS

Read your meter at the same time each day, preferably once a week. Record the cubic metres used so that you can compare your readings.

